



Genesee County Health Department Accreditation Report

Conducted by: Michigan Local Public
Health Accreditation Program

February 10, 2025



GENESEE COUNTY
HEALTH DEPARTMENT

GCHD Total Site Visit Overview

- ▶ Accreditation happens every 3 years, the Michigan Local Public Health Accreditation Program reviews for quality and minimum program requirements (MPRs). **Overall results: all MPRs met.**
- ▶ Our Michigan public health accreditation standards assure local health departments maximize their potential to protect and improve people's health in their communities.
 - ▶ Including services, such as:
 - Providing vaccinations and disease prevention programs;
 - Ensuring our food, water, and air are safe and clean;
 - Responding to emerging health threats, like H1N1; and
 - Identifying and promoting policies that create healthy communities.



GENESEE ■ COUNTY
HEALTH DEPARTMENT

Powers and Duties

Areas of Strength:

- ▶ GCHD has a well-established enforcement protocol for health laws.
- ▶ Collaboration with local and state agencies for effective health response.
- ▶ GCHD effectively monitors and communicates public health data to the community.
- ▶ Collaboration with Michigan State University for Health Equity Report Card. GCHD has a robust system in place for disease investigations, including communicable diseases.
- ▶ GCHD uses multiple communication channels to educate the public on health risks and preventative measures.
- ▶ Active engagement with the community through educational events and partnerships. GCHD provides comprehensive services to the community, including extended clinic hours and diverse community partnerships.



GENESEE ■ COUNTY
HEALTH DEPARTMENT

Food Service

Areas of Strength:

- ▶ GCHD conducts 100% quality assurance reviews on food establishment plans and inspections.
- ▶ Strong plan review process and QA procedure.
- ▶ GCHD has a structured evaluation frequency system based on food establishment risk, utilizing inspection software.
- ▶ GCHD effectively conducts field evaluations for temporary food establishments (TFEs) and maintains 100% QA reviews.
- ▶ GCHD uses a comprehensive system to document violations, ensuring consistency and clarity in the evaluation reports.
- ▶ GCHD maintains a field QA program with standardized trainers to ensure proper evaluations.
- ▶ GCHD effectively uses software for tracking FSE evaluations and maintains proper records.



GENESEE ■ COUNTY
HEALTH DEPARTMENT

Onsite Wastewater Treatment Management

Areas of Strength:

- ▶ GCHD maintains consistent monitoring of septic systems and holds stakeholders accountable.
- ▶ GCHD is proactive in responding to complaints and ensuring timely resolutions for failing septic systems.



GENESEE ■ COUNTY
HEALTH DEPARTMENT

Recommendations for Growth Opportunities

Onsite Wastewater Treatment Management:

Indicator 1.2:

Evidence that the local wastewater treatment regulation authorizes enforcement measures including permit denials, correction orders, and/or other remedies.

This indicator was met.

Recommendations:

GCHD evaluate updating their policies to include the current, and new, processes and procedures as they have changed with the introduction of their new database and permitting software.



GENESEE ■ COUNTY
HEALTH DEPARTMENT

General Communicable Disease Control

Areas of Strength:

- ▶ GCHD has a solid system for receiving and processing communicable disease reports from multiple sources.
- ▶ GCHD consistently analyzes communicable disease data on a weekly basis, ensuring timely intervention.
- ▶ GCHD ensures timely and accurate electronic submission of case reports to MDHHS, achieving high completion rates.
- ▶ GCHD prepares and distributes comprehensive annual communicable disease reports, which include trend analysis.
- ▶ GCHD has a well-defined process for investigating individual case reports and outbreak investigations.
- ▶ GCHD effectively tracks and logs communicable disease surveillance data.



GENESEE ■ COUNTY
HEALTH DEPARTMENT

Recommendations for Growth Opportunities

General Communicable Disease Control:

Indicator 1.1:

The local health department shall maintain annually reviewed policies and procedures.

This indicator was met.

Recommendations:

Detailing the additional steps needed in Michigan Disease Surveillance System (MDSS) for out of state referrals. In addition to marking the case status as “non-Michigan case”, also mark the investigation status as new, update the associated case address, and assign to appropriate MDSS coordinator.



GENESEE ■ COUNTY
HEALTH DEPARTMENT

Recommendations for Growth Opportunities

General Communicable Disease Control:

Indicator 1.2:

The local health department collects, collates, and analyzes CD surveillance data that is reported to their jurisdiction by physicians, laboratories, and other authorized reporting entities.

This indicator was met.

Recommendations:

Unless utilized, GCHD could consider excluding the “not a case” status from the weekly surveillance log.



GENESEE ■ COUNTY
HEALTH DEPARTMENT

Recommendations for Growth Opportunities

General Communicable Disease Control:

Indicator 3.3:

Presence of adequately prepared staff capable of enforcing Michigan law governing the control of CDs.

This indicator was met.

Recommendations:

Consider maintaining a spreadsheet listing staff trainings - staff name, training title, date of attendance. This would make it both easier to review for accreditation and easier for GCHD to ensure staff are receiving appropriate continuing education.



GENESEE COUNTY
HEALTH DEPARTMENT

Immunizations

Areas of Strength:

- ▶ GCHD administers immunizations in a timely manner and is proactive in tracking immunization records.
- ▶ GCHD achieves high vaccination rates across various demographics.



GENESEE ■ COUNTY
HEALTH DEPARTMENT

Recommendations for Growth Opportunities

Immunization:

Indicator 1.1:

The LHD shall offer vaccines to the public for protection in case of an epidemic or threatened epidemic of a vaccine preventable disease.

This indicator was met.

Recommendations:

- ▶ GCHD re-establish annual mock training drills using the Mass Vaccination Plan. As we get further from the COVID-19 pandemic, these drills can be very beneficial to new staff.
- ▶ Adding to the Mass Vaccination Plan information on storage and handling practices for planned transport and additional plan for emergency transport.



GENESEE COUNTY
HEALTH DEPARTMENT

Recommendations for Growth Opportunities

Immunization:

Indicator 1.2:

LHD conducts free periodic immunization clinics for those residing in its jurisdiction. Clarification: “free periodic immunization clinics” refers to public vaccine, particularly Vaccines for Children Program (VFC) vaccine, Adult Vaccine Program (AVP) vaccine, and Section 317 funded vaccine. The LHD must be conducting clinics and administering vaccines.

This indicator was met.

Recommendations:

- ▶ GCHD to send out client satisfaction surveys to client’s homes to encourage larger participation. Client satisfaction surveys must be completed annually. The Reviewer recommends updating the policy regarding the surveys to reflect this requirement.
- ▶ GCHD add a list of all available immunizations on the GCHD website.
- ▶ Combining small policies into a concise policy. GCHD should include all adult policies under one policy and to keep child and adult policies separate. The Reviewer recommends that GCHD change all policies that include “clients coming into the immunization clinic” to include “clients coming into the health department”.



GENESEE COUNTY
HEALTH DEPARTMENT

Recommendations for Growth Opportunities

Immunization:

Indicator 1.4:

The local health department shows evidence of clientele reminder/recall for Advisory Committee on Immunization Practices (ACIP) vaccines not up to date.

This indicator was met.

Recommendations:

GCHD to do non-mail recalls through appointment reminds using their EMR system and calling clients.



GENESEE ■ COUNTY
HEALTH DEPARTMENT

Recommendations for Growth Opportunities

Immunization:

Indicator 2.1:

The LHD adheres to guidelines found in the Standards for Child and Adolescent Immunization Practices and Standards for Adult Immunization Practices regarding vaccination policies for their own clients.

This indicator was met.

Recommendations:

GCHD to post the fee schedule on the GCHD immunizations website.



GENESEE ■ COUNTY
HEALTH DEPARTMENT

Recommendations for Growth Opportunities

Immunization:

Indicator 2.2:

The LHD adheres to guidelines found in the Standards for Child and Adolescent Immunization Practices and Standards for Adult Immunization Practices when administering vaccines to clients.

This indicator was met.

Recommendations:

GCHD website does not contain sufficient immunization information or resources for their clients. All links to CDC and MDHHS pages that were on the GCHD website were found to be broken. The Reviewer suggests posting trusted parent-friendly websites and resources.



GENESEE COUNTY
HEALTH DEPARTMENT

Recommendations for Growth Opportunities

Immunization:

Indicator 2.3:

The LHD adheres to guidelines found in the Standards for Child and Adolescent Immunization Practices and Standards for Adult Immunization Practices regarding immunization policies for local health department staff.

This indicator was met.

Recommendations:

Mandatory Vaccination Policy for GCHD staff to be put in place to better protect GCHD employees and clients visiting the Health Department for service. The Reviewer recommends GCHD offer all employees an immunization record review during the respiratory virus season and administer any vaccines that are recommended.



GENESEE ■ COUNTY
HEALTH DEPARTMENT

Recommendations for Growth Opportunities

Immunization:

Indicator 2.4:

The LHD adheres to guidelines found in the Standards for Child and Adolescent Immunization Practices and Standards for Adult Immunization Practices by promoting immunizations within their jurisdiction.

This indicator was met.

Recommendations:

GCHD immunization supervisor and VFC Primary Coordinator to share the MDHHS Quarterly Immunization Report Card with GCHD staff.



GENESEE ■ COUNTY
HEALTH DEPARTMENT

Recommendations for Growth Opportunities

Immunization:

Indicator 3.2:

The local health department shall assure that all requirements for participation in vaccine programs (including VFC and other vaccine distribution programs) are met.

This indicator was met.

Recommendations:

GCHD immunization staff run the Return/Waste Transaction Report monthly and follow up with transactions in MCIR that were not properly processed by their VFC providers.



GENESEE COUNTY
HEALTH DEPARTMENT

HIV/AIDS & STI

Areas of Strength:

- ▶ GCHD offers extensive HIV testing and treatment services and maintains high linkage to care rates.
- ▶ GCHD ensures individuals with HIV are connected to care in a timely and consistent manner.



GENESEE ■ COUNTY
HEALTH DEPARTMENT

Family Planning

Areas of Strength:

- ▶ GCHD offers comprehensive family planning services, including counseling and contraceptive access.
- ▶ GCHD provides clear, accessible family planning education materials.



GENESEE ■ COUNTY
HEALTH DEPARTMENT

Children Special Health Care Services (CSHCS)

Areas of Strength:

- ▶ GCHD manages the CSHCS program well, ensuring children with special health care needs have access to necessary services.
- ▶ GCHD tracks and follows up with all CSHCS clients effectively.



GENESEE ■ COUNTY
HEALTH DEPARTMENT

Hearing & Vision

Areas of Strength:

- ▶ GCHD provides comprehensive hearing screening services to preschool and school-age children.
- ▶ GCHD tracks and follows up on all children referred from hearing screenings.
- ▶ GCHD conducts comprehensive vision screenings for school-aged children, ensuring timely referrals.
- ▶ GCHD tracks vision screening data and ensures all children receive necessary follow-ups.



GENESEE ■ COUNTY
HEALTH DEPARTMENT

Recommendations for Growth Opportunities

Hearing & Vision:

Indicator 4.1:

Documentation exists that written statements indicating the necessary course of action have been provided to parents or guardians of children whenever follow-up examination or treatment is necessary as a result of vision screening.

This indicator was met.

Recommendations:

Verbiage regarding the need for an eye exam be incorporated from the current "Fail with Rx" letter to aid in communicating the need for this next step when a child is referred.



GENESEE ■ COUNTY
HEALTH DEPARTMENT

Women, Infants, and Children (WIC)

Areas of Strength:

- ▶ GCHD administers the WIC program effectively, ensuring food and nutrition assistance for eligible families.
- ▶ GCHD provides excellent educational materials on nutrition, breastfeeding, and maternal health.



GENESEE ■ COUNTY
HEALTH DEPARTMENT

Upcoming Initiative

HPV Grant

- ▶ Awarded competitive grant from National Association of County and City Health Officials (NACCHO) to fund the development of an HPV vaccine campaign
- ▶ Currently hosting focus groups to inform development
 - ▶ Target audience: Parents of teens



GENESEE COUNTY
HEALTH DEPARTMENT



HPV (Human Papillomavirus) Interviews

Parents and Guardians of kids 9 - 18, your voice matters.

What to Expect:

- ✔ \$40 Gift Card
- ✔ HPV Focused Questions
- ✔ HPV Related Messaging
- ✔ One-on-one Interview

How to Participate:

Fill out our interest form by scanning the QR Code or Calling Our Team at (810) 257-3148.

The Interview:

Microsoft Teams will be used to record each interview.

*Video is NOT required

Time - Please set aside a minimum of 30 minutes for your interview



Email Questions to:
LJohnson@geneseecountymi.gov

SCAN



Resources will be available for parents after the interview.

Purpose and Affiliation Statement: The Genesee County Health Department is gathering information to assess public awareness of HPV (Human Papillomavirus) and its associated vaccine. The primary objective of this initiative is to enhance the completion rates of the HPV vaccine series among the local population. This project is being funded by the National Association of County and City Health Officials (NACCHO).

Upcoming Initiative

PFAS

- ▶ Doctoral student with University of South Florida, Flint native
- ▶ Exploring what GCHD can do for PFAS/PFOS education and interventions in Genesee County



GENESEE COUNTY
HEALTH DEPARTMENT

Upcoming Initiative

Strategic Plan Development

- ▶ **Inclusive Process:** Staff, community, and stakeholder input intentionally incorporated
- ▶ **What We've Done:**
 - ▶ Internal SWOT Analysis
 - ▶ Community & Stakeholder Listening Sessions
 - ▶ Environmental Scan of local/regional trends & data
- ▶ **Plan Timeline:** Covers 2025-2030
- ▶ **Expected Completion:** September 1, 2025

Mission

To improve public health and equity in Genesee County through exceptional services, advocacy, and meaningful collaboration.

Vision

Genesee County's trusted public health resource, supporting communities to thrive.

Values

Integrity & Excellence:

We operate with professionalism, accountability, and a dedication to the wellbeing of the community, fostering trust and confidence among all.

Community Driven:

Our community-driven approach focuses on building mutual respect, fostering collaboration and partnerships, promoting inclusivity, and supporting all.

Growth-oriented:

Commitment to continuous learning and development, through ongoing evaluation and quality improvement.

Health Equity:

Creating fair and just opportunities for all to attain their highest level of health.



GENESEE COUNTY
HEALTH DEPARTMENT

Upcoming Initiative

Mobile Health Unit

► Purpose:

- Expand access to public health services through a fully equipped mobile unit

► RFP Process:

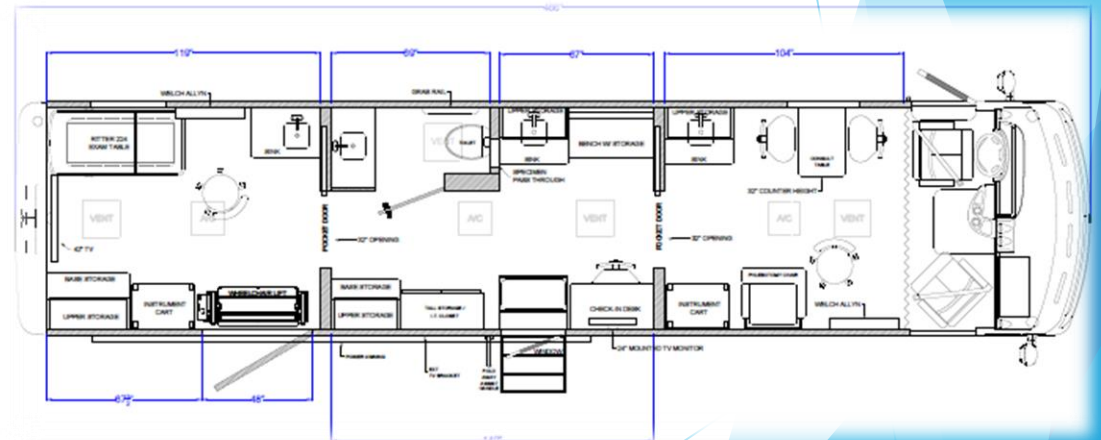
- Issued in March 2025
- 10 vendor proposals received
- Review team of cross-department staff formed

► Current Status:

- Top 3 vendors identified for final review

► Next Steps:

- Final recommendation to be brought forward for BOC approval by August 2025
- Anticipated delivery within 1 year of contract award



GENESEE COUNTY
HEALTH DEPARTMENT

Upcoming Initiative

Daddy as a Doula (DAD)

- ▶ Daddy as a Doula (DAD), aims to improve perinatal outcomes by providing culturally responsive doula-adjacent training to fathers.
- ▶ We aim to use an innovative approach to enhance father involvement, reduce maternal stress, foster emerging father-child bonds, reduce the risk of child abuse, and improve access to care, ultimately promoting healthier families in Genesee County.
- ▶ Target population of 50 fathers in Genesee County over a two-year span with emphasis on underserved communities, aiming to strengthen family support systems and improve maternal-infant health outcomes.



GENESEE ■ COUNTY
HEALTH DEPARTMENT

DADDY AS A DOULA (DAD) INITIATIVE



PROGRAM

Trains fathers or father-figures to act as non-professional doulas

PURPOSE

Teach comfort techniques, advocacy, and postnatal care

Upcoming Initiative

Vector Borne Disease Surveillance Program (VBDSP)

- ▶ **Surveillance Period:** June 1 - September 30, 2025 (17 weeks)
- ▶ **Tick Surveillance:**
 - ▶ 2 tick drags planned during the surveillance period
- ▶ **Mosquito Surveillance:**
 - ▶ 36 mosquito collection events scheduled
 - ▶ 5 collection locations selected based on:
 - ▶ Historical West Nile Virus activity
 - ▶ Areas without routine mosquito spraying
- ▶ **Collection Sites:**
 - ▶ Flushing Township Nature Park
 - ▶ Richfield County Park
 - ▶ Crossroads Village
 - ▶ Linden High School
 - ▶ University of Michigan-Flint Main Campus

DO NOT TOUCH
PROPERTY OF GENESEE
COUNTY HEALTH DEPARTMENT

Interested in learning more about mosquitos in Michigan? Scan the QR code below!



GENESEE COUNTY
— MICHIGAN —



GENESEE COUNTY
HEALTH DEPARTMENT